

BENCH DRAFTING PROJECT

1. MEASURE THE BENCH IN THE CLASSROOM
2. FIGURE OUT WHAT THE LARGEST SCALE THE BENCH CAN BE DRAFTED IN SO ALL THREE STANDARD VIEWS (ELEVATION, PLAN, SECTION) WILL FIT ON AN 11"x17" PIECE OF PAPER.
3. ROUGH IN YOUR LAYOUT ON 11"x17" PAPER.
4. ALLOW ROOM FOR DIMENSIONS & LABELS
5. DRAFT A FINAL VERSION OF THE BENCH ON 11"x17" VELLUM.

CLEAR, CONCISE, ACCURATE

- A. USE A #2H DRAFTING PENCIL
- B. SHARPEN YOUR PENCIL OFTEN
- C. ALL LETTERS, NUMBERS, ETC ARE TO BE WRITTEN USING 1/8" GUIDELINES
- D. DIMENSION SO THE BENCH COULD BE CONSTRUCTED
- E. DECIDE HOW YOU WOULD BUILD THE BENCH: INDICATE THIS WITH DIMENSIONS & NOTES.
- F. INCLUDE TITLE BLOCK IN LOWER RIGHT HAND CORNER.

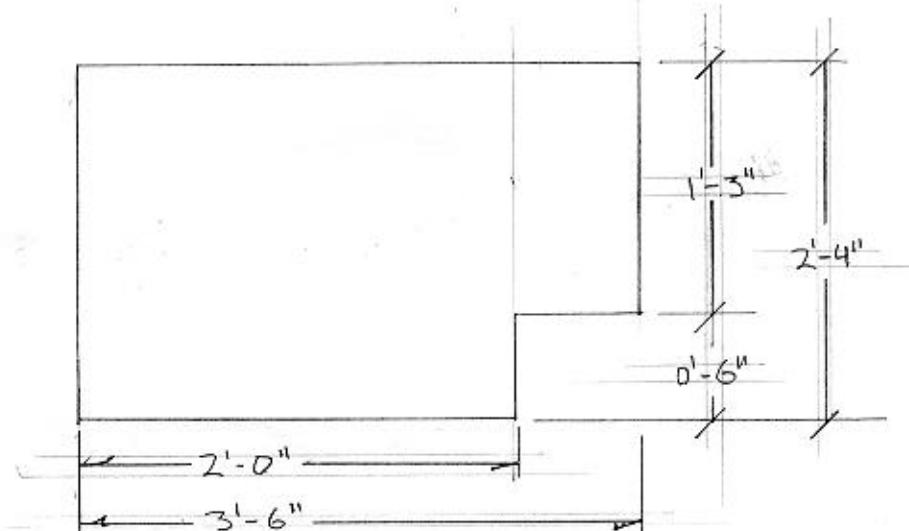
ORGANIZATION OF VIEWS

ELEVATION

SECTION

PLAN

NOTES



BENCH DRAFTING

PRAMA 1320

YOUR NAME

SCALE:

DATE